

Product Cut Sheet: Motorized Multiple Band Shade System

AC Motorized Multiple Band Roller Shade System

A multiple-banded shade is a set of individual shades (generally 2 to 5 fabric bands) that are connected together by shade coupler brackets. These fabric bands are all run off of an individual motor. In other words, 1 motor can operate anywhere from 2 to 5 shade bands at one time. Please note that for this application, shades cannot be controlled individually; each set of coupled shades will always raise and lower together in unison. A multiple-banded shade application reduces the number of motors required for a given job and eliminates additional wiring expenses that might have been required for additional motors.

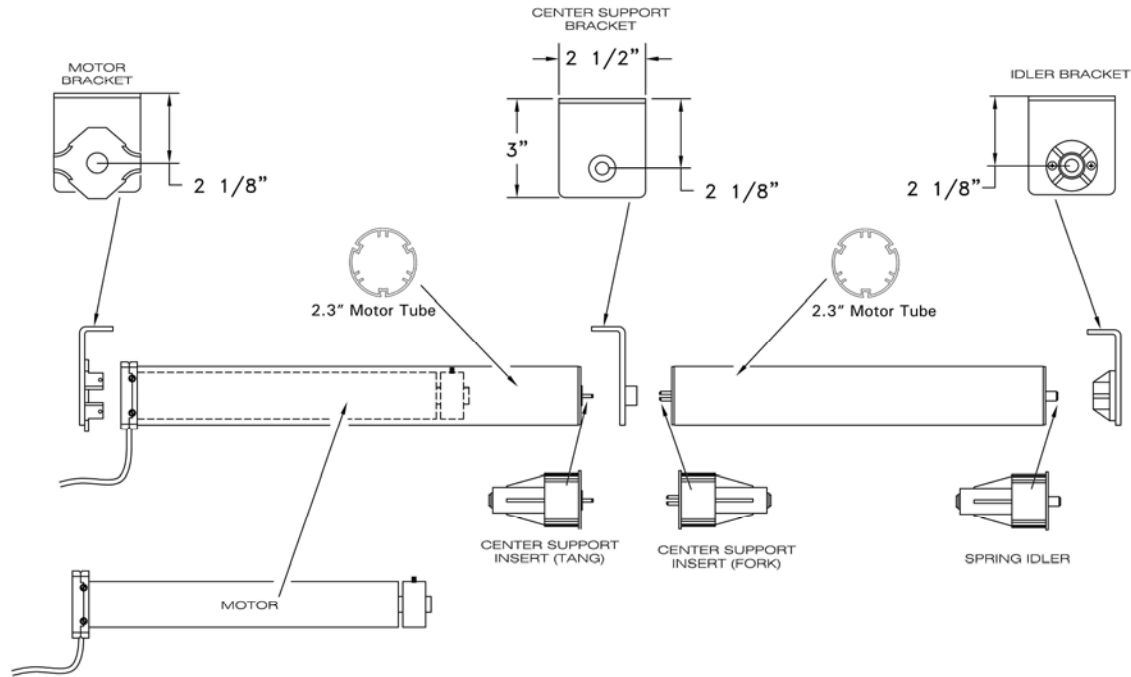
Note: The maximum size of the overall shade and the number of shade bands is subject to weight limitations of an individual motor.

Positive Reasons for using Multiple-Banded Shades:

- Reduction of motor costs
- Reduction of electrician costs
- Break up very large shades into smaller ones

Negative Reasons for not using Multiple-Banded Shades:

- More complex bracket installation
- Group control of shades only
- All shades must be the same height



The Multiple-Band Straight Line Center Support System Features:

- A minimal 3/4" light gap between fabric panels
- A tongue and groove locking system for firm fitting
- Spring loaded center support insert pin for simple installation and removal

